

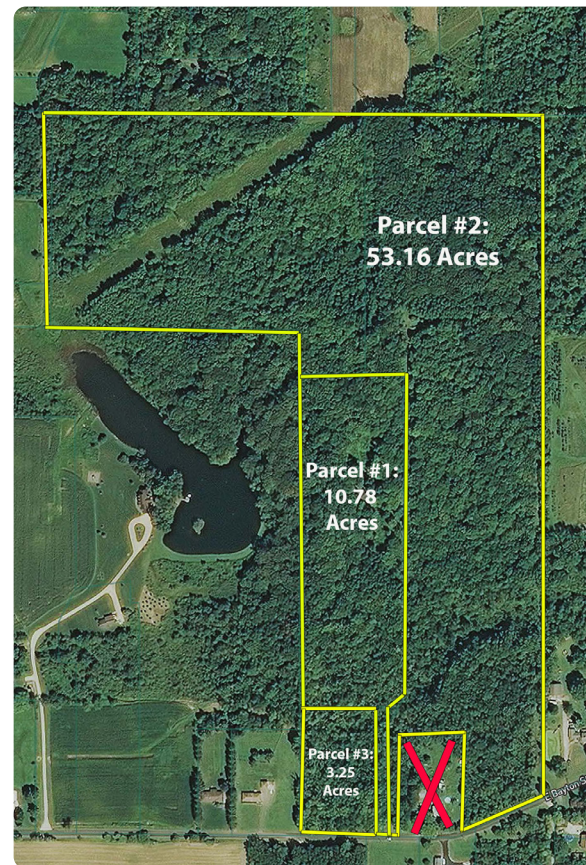


2722 Fulton Dr. NW, Canton, OH 44718
kikoauctions.com

FRIDAY - OCTOBER 9, 2020 - 10:30 AM
REAL ESTATE SELLS AT 12:00 PM

67 ACRES WOODED HIDEAWAY OFFERED IN 3 PARCELS

- #1: Secluded Home/Shop/Barn 10 Acres W/ Free Gas
- #2: 53-Acre Wooded Parcel W/ Driveway
- #3: 3.2-Acre Wooded Parcel



Auctioneer/Realtor®
BROOKS E. AMES
330-703-2732
brooks@kikocompany.com



Auctioneer/Realtor®
PETER R. KIKO SR.
330-705-5996
peter@kikocompany.com

800-533-5456 | kikoauctions.com



AUCTION

LEADING THE INDUSTRY SINCE 1945

Realtors • Auctioneers • Advisors

FRIDAY - OCTOBER 9, 2020 - 10:30 AM
REAL ESTATE SELLS AT 12:00 PM

67 ACRES WOODED HIDEAWAY OFFERED IN 3 PARCELS

WASHINGTON TWP. – STARK COUNTY - MARLINGTON SCHOOLS

Also Selling: Antiques – Stoneware – Primitives – Early Furniture – Cupboards – Wood Shop Tools and Equipment – Auto – Lifelong Collection.

ABSOLUTE AUCTION, ALL SELLS TO HIGHEST BIDDER(S). LOCATION:

700 E. BAYTON ST., ALLIANCE, OHIO 44601

Directions: From US RT-62/SR-173 at Union Square in Alliance, OH take SR-183 south to Bayton Rd. then east to auction.

OPEN HOUSE: MONDAY, OCTOBER 5, 2020 – 6:00-7:00 PM



800-533-5456 | kikoauctions.com



Have you been searching for that special place that offers privacy, nature and relaxation? Well this could be that place! Located off the road, down the lane, you will find a charming century two-story home. Home was completely renovated including new basement and chimneys. Home features 8 rooms, 4 working fireplaces, two full baths, wide plank flooring, open staircase, screened-in porch, free gas heat per lease, nature views and simply a good feeling! Better check it out! Other improvements include a 24x32 oversized two-car detached garage w/ a second story finished woodshop. Property also includes a 24x36 Yankee style barn w/ loft. All this on 67 gently rolling, completely wooded acres w/ hiking trails and timber potential. Gas and oil rights transfer, convenient location just minutes to shopping, schools, hospital, etc.

Land to be offered as follows:

- PARCEL #1:** 10.7 acres wooded w/ home, garage/shop, barn, driveway. Frontage on Bayton Rd.
 - PARCEL #2:** 53 acres wooded, plus use of existing driveway. 330 ft road frontage. Ideal hideaway parcel.
 - PARCEL #3:** 3.2 acres wooded. 300 ft frontage on Bayton Rd.
- NOTE:** Parcels will be offered separate then together and will sell the way it brings the most. Land is a good investment you can enjoy!



CONTENTS: (NOTE: 60+ years of collecting – anything can/will turn up! Plan to attend – 2 auction rings)

STONEWARE – CROCKS – PRIMITIVES – ORIENTAL RUGS: Crockers include Hamilton, Jones Greensboro PA, Haxstun & Co., Williams & Reppert and many various sizes and styles (20+) – spongeware – pudding bowls – Bennington bowls – Bennington lion – loads of baskets, some very early – wooden buckets – braided rugs and loads of oriental rugs – Bronze style cherub/angel heavy candle holders – match holders – early tribal mask – various brass candlesticks – wood butter churn – cast iron nut cracker – early pierced tin lanterns – candle molds – cast iron pots, pans, trivets, toaster, bean pots, Dutch ovens, fat lamps and more – wood carved swan and fish – butter pads and molds – hand hammered ladles – duck decoys.

TOBY MUGS – CHINA – GLASSWARE – TOYS: Nice collection of Toby mugs/pitcher include Royal Doultons – France pictorial plates - Various Staffordshire dogs – historic blue plates – Flow blue pcs – Fenton pcs – Johann Haviland China Set, serve 12, violet flower pattern – Large collection of Pewter bowls, cups, plates, tea sets and more – copper teapots – hen on nest – Lenox porcelain fish – pie birds – glass to include pattern, cut, candlewick and more – knife rests – pink depression glass – Spode china – Alfred Meakin Staffordshire – large Goebel doberman dog – Dolls to inc. Bye-Lo-Baby, Madam Alexander, Jackie Coogan, Russian Nesting, and others – Delft ceramic villages – doll/child slat trunk – Marks collection Gone w/ the Wind art – James Dean and Wizard Of Oz dolls – paper weights – Franklin Mint Precision Farmall Mod A tractor – carved animals – tin toy Ferris wheel – wood rocking horse – Clown on World mechanical bank – paper mache rabbit – balance fighting toy swordfight – wooden Noah’s Ark w/ animals.

FURNITURE – MATERIAL - COVERLETS – QUILTS: Heavily carved ornate gentleman’s chest, claw footed, linen sides over 6.5’ tall – flip-top game table – early lift-top desk – large early corner cupboard - Queen Anne lift top cedar chest – blanket chests – gate leg tables – early Grandfather clock – mahogany lift-top game table – 3 leg round mahogany table – ¾ rope poster bed – (2) black deacon bench – oak flat wall cupboard – 2 pcs step back cupboard – 2 pcs step back blind door cupboards – wrought iron floor lamp and other various lamps – windsor style chairs – dining tables – wood kindling box – rush seat chairs – gossip bench – 4-drawer chest – rope beds – wood stools – spinning

wheel – wall hanging corner cupboard – Pennsylvania House 4-drawer silver chest and 2-drawer Queen Anne chest – plank bottom chairs - Seth Thomas and other mantle clocks – 2-drawer, 2-door jelly cupboards – wingback chairs – cherry dresser and nightstand – small Shaker leg single drawer stand – modern Queen Anne high dovetailed blanket box – 7-drawer chest – dep. cedar chest – OG clock – washstand – early lap desk – claw foot desk w/ chair – Hickory Furniture Co. red and cream loveseat – Coverlets inc. 1848 Tuscarawas Co. Ohio Daniel King – 15+ hand done quilts – loads of linen and material – fur collars and coats – purses.

FIREARMS - ART – COLLECTIBLES – SEWING MACHINE – JEWELRY: Savage Mod 987 22 Cal – J Stevens Little Scout 22 cal. 14.5 – Springfield mod. 87A 22 Short or Long – (2) Oil on Canvas Dirt Road 1914 and Portrait – oval pictorial – Lincoln deep frame – violin, clarinets, trombone back brass trumpet – amplifier – (3) feather weight sewing machines – nice lot of jewelry inc. some gold and sterling – loads of hardback books inc. antique, novels, and more – X-mas décor.

AUTO – WOODWORKING and SHOP TOOLS – TRACTORS – WOOD: 2005 Chevy Impala KT w 113,000 miles – Rockwell table saw – C-clamps – Delta frame and trim saw – Craftsman jointer – 8.5” Ryobi radial arm saw – Delta 12” planer – DeWalt Sawzall – hand planes, groove planes, mold planes – Craftsman router table – Craftsman 12” band saw – Craftsman 5hp 20gal air comp – Craftsman 4x36” belt/disc sander – Craftsman stack toolbox – loads of hand tools and power tools – Craftsman wood lathe – and loads more bolt stock, tools, and organizers – John Deere 140 riding mower (been sitting awhile) – Farmall Cub w/ belly mower (been sitting awhile) – garden carts – various wood incl. some rough cut.

AUCTIONEER NOTE: Property is down long lane – parking on street with shuttle bus to and from auction – pick up times for large items following week

TERMS ON REAL ESTATE: 10% down auction day, balance due at closing. A 10% buyer’s premium will be added to the highest bid to establish the purchase price. Any desired inspections must be made prior to bidding. All information contained herein was derived from sources believed to be correct. Information is believed to be accurate but not guaranteed. Property to be offered as a multi par auction and sold whichever way it brings the most. Bank financing available to qualified bidder.

TERMS ON CHATTEL: Driver’s license or State ID required to register for bidder number. Cash, Check, Debit Card, Visa, or MasterCard accepted. 4% buyer’s premium on all sales, 4% waived for cash or check when paid sale day. Information is believed to be accurate but not guaranteed. Multi Par auction process may be used.

